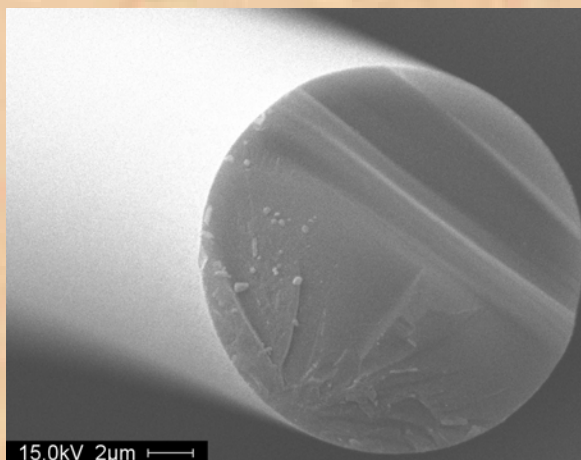


MATECH

Introducing

SiNC-1400X Ceramic Fiber

SiNC (Silicon Nitride / Silicon Carbide) fibers are melt spun in continuous 50 to 500-filament tow. SiNC fibers exhibit excellent creep resistance and are chemically stable to 1350°C with less than 2% oxygen content. Developed with funding from the US Navy (NAVAIR, Patuxent River, MD). Limited Commercial Availability in December 2011.



100% Amorphous (Glassy)
Fibers Continuous 500
Filament Tow.

Diameter 12-14 µm

Tensile Strength* 2.75 GPa
St. Deviation 0.5 GPa

Young's Modulus 200 GPa
St. Deviation 26 GPa

Density 2.48g/cc

*current



MATECH
31304 Via Colinas, Suite 102
Westlake Village, CA 91362
p: 818.991.8500 f: 818.991.4134
e-mail: ed@matechgsm.com
www.matechgsm.com